

# spacious touring

# with the new explorer range



## The EXPLORERS

The exciting EXPLORER range brings a new generation of lightweight, spacious, distinctive yet reasonably priced, caravans to tourism. They embody design features and manufacturing skills gained during more than 50 years of constructing and using caravans.

The most modern materials available and up-to-date construction techniques are employed.

EXPLORER caravans combine a pleasing blend of colours with a shape that is both functional, attractive and unique.

An EXPLORER is not just better value for money. It is tailor made for pleasure and comfort.



# the explorers — built by carava

The EXPLORER range of caravans has been developed after careful research into the needs of the family who want maximum mobility and comfort both whilst touring as well as on site and at reasonable cost.

The lightweight characteristics of the EXPLORERS are achieved through first class materials and superior design and craftsmanship.

Function, furnishings, good looks, low weight, strength, durability and finish have all been taken care of in a practical design concept.

Features include:

Unique front and rear wide view through window bays. Ample working surfaces in an attractive matt, leather patterned Melamine.

All models have over 6ft. headroom.

Curtain divider in matching materials.

Good stowage with full length wardrobe incorporating locker.

A roomy overhead division for crockery.

A full width end locker.

Foam mattresses, 5 inches thick, are in an attractive shade of blue/green a la mode, with nylon hooked curtains to suit.

Thick rubber-backed carpet harmonises with the distinctive but restful decor.

Interior plywood walls and furniture have an attractive wood grained finish.

Ceilings are in white embossed washable P.V.C.

Stainless steel sink unit with generous kitchen drawers and cupboard space and fold-away faucet.

Foot pump and exterior connection for water.

Two-burner hotplates and grill with room for an oven (optional).

Fold away plate rack.

Fridge type cupboard door food storage.

Neat nylon door retaining catches.

Gas and fluorescent lighting (two tubes in the 12 and 14 models).

A roomy integral toilet compartment.

In addition to side ventilation and adjustable roof vent, special louvres are built-in to the rear window bay and give good thro' flo' ventilation.

All models have a stable door.

All models have at least one bed over 6ft. long.



*Explorer 10 looking forward*

Awning rails run along the top and vertical ends on the nearside.

The body is fully insulated including the floor. Body framework is light yet robust, made from selected hardwood.

The aluminium exterior cladding has an attractive acrylic finish.

Matching stone guards are fitted at both front and rear. Window frames are of polished aluminium and all open with the exception of the front bay.

A 7-pin connector plug is standard.

The well-proven B & B chassis is used. It has good towing characteristics and gives excellent service.

Exterior decor is in flake grey and magnolia.

A gas bottle cover can be supplied (optional).

All models will accept a refrigerator.

*Explorer 12 looking forward*



*Explorer 12 looking to the rear*

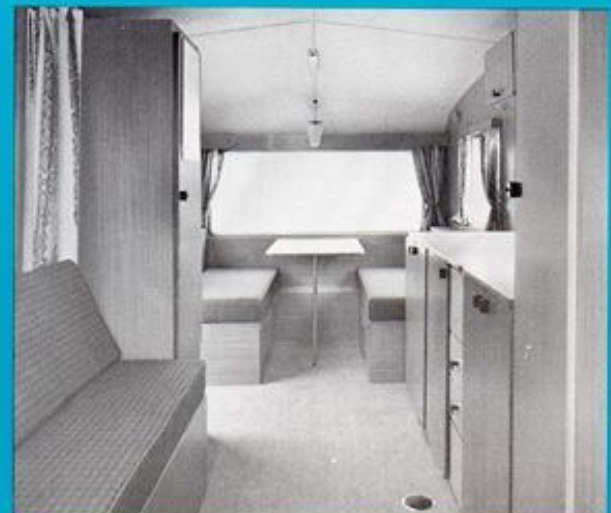
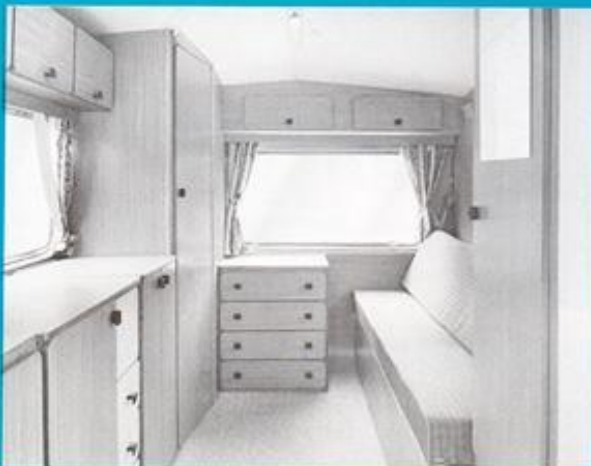




# anners for caravanners



*Explorer 14*



*Explorer 14 looking forward*

*Explorer 14 looking to the rear*



## EXPLORER 10 unusually spacious ideal for the small car

Plenty of storage space. An integral toilet compartment with extension. Comfortable 5 inch deep mattresses, at least one bed over 6 feet long. Thick rubber-backed carpet harmonising with the striking but restful interior decor. Gas and fluorescent lighting are provided.

These are just a few of the comprehensive and practical design and layout features, cleverly incorporated in the EXPLORER 10.

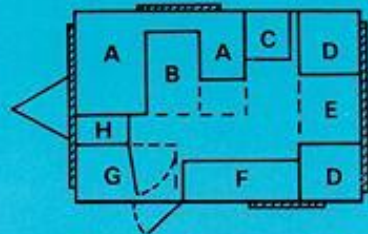
First impressions are important and as you enter the 4-berth EXPLORER 10 you will immediately get the feeling of spaciousness. Is it really only a '10'? Yes!—and it can be towed by a Mini!

But the EXPLORER 10's spacious unimpeded floor space is not achieved at the expense of comfort or convenience. There are good working surfaces including sliding sink top. This slides to one side or can be removed entirely. Two tables. Full length wardrobe.

Overall length	13ft 10in.	4.216m
Overall height	7ft 6in.	2.286m
Body length	10ft 3½in.	3.137m
Body width	6ft 9in.	2.057m
Weight (ex works)	10 cwt	508kg
Gross laden weight	13½ cwt	686kg

- A Double bed—6ft x 3ft 10in. (1830 x 1170mm)
- B Table
- C Wardrobe
- D Single bed—6ft 5½in x 2ft (1970 x 610mm) with bunk over—6ft 5½in x 1ft 10in. (1970 x 560mm)
- E Table
- F Sink/cooker
- G Toilet
- H Cupboard

- Roof locker across front over A & H
- China cabinet over F
- Shelf at rear end over D & E



## EXPLORER 12 more living space excellent stowage

Similar in style and general appearance to the EXPLORER 10 this 4-berth model has an entirely different, carefully planned layout.

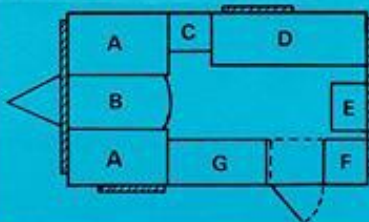
The dinette beds provide the ultimate in double bed comfort.

A roomy locker provides additional stowage.

Two fluorescent lights as well as a gas light provide ample illumination.

Sink unit top slides to one side or can be removed entirely.

- A Double bed—6ft 5½in x 3ft 10in. (1970 x 1170mm)
- B Table
- C Wardrobe
- D Single bed—6ft x 2ft (1830 x 610mm) with bunk over—5ft 10in x 1ft 10in. (1780 x 560mm)
- E Cupboard
- F Toilet
- G Sink/cooker
- China cabinet over G
- Roof locker at rear end over D & E
- Shelf across front end



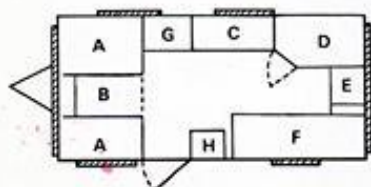
Overall length	15ft 4in.	4.673m
Overall height	7ft 6½in.	2.299m
Body length	11ft 10in.	3.607m
Body width	6ft 9in.	2.057m
Weight (ex works)	12 cwt	609kg
Gross laden weight	15½ cwt	787kg

## EXPLORER 14 ample room for the family

The 4-berth EXPLORER 14 has a double bed, one single and a bunk over and across the foot of the single beds.

Additional storage space is provided by the chest of self-locking drawers.

With a table and a hinged sink top, plenty of working surfaces are provided for work and play.



- A Dinette bed—6ft 5½in x 3ft 10in. (1970 x 1170mm)
- B Table
- C Sink/cooker
- D Toilet
- E Chest
- F Bed—6ft x 2ft (1830 x 610mm) with bunk over—5ft 10in x 1ft 10in. (1780 x 560mm)
- G Cupboard
- H Wardrobe
- Locker at rear and over E & F
- China cabinet over C
- Shelf at front over A & B



Overall length	17ft 3½in.	5.270m
Overall height	7ft 7½in.	2.318m
Body length	13ft 10½in.	4.235m
Body width	6ft 9½in.	2.064m
Weight (ex works)	13½ cwt	686kg
Gross laden weight	17½ cwt	889kg

The manufacturer reserves the right to use alternative materials and supplies and modify design as required without prior notice. Particulars of any changes may be obtained from the manufacturers.

## EXPLORER CARAVANS

205 Leckhampton Road, Cheltenham, Glos.  
GL53 0AN

Telephone: 53695 & 59296