

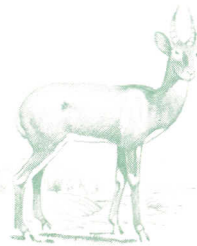
the spacious PUKU

is offered as a two or four berth, the former, 15' 0" (457 cm) long, 6' 6" (198 cm) wide and 6' 3" (191 cm) headroom, has all the pleasing and practical features of the Sable, but with added wardrobe accommodation, provision for fitting a refrigerator, fitted gas fire, greater floor area, and two single beds permanently in full length position. The nearside door on the 2-berth is behind the wheel to give this layout. The toilet in this model is now a one-piece self coloured F.R.P. unit—easily kept spotless. Furniture redesigned in accordance with modern concept.



Puku 4-berth

The exterior is illustrated above; the layout of the front end is similar to the Sable. In the centre, to the rear of the door on the nearside, is a settee type double bed, with kitchen across the rear end. A gas fire point is fitted on the front of the compactum. Suspension (as Springbok) but with lighter springs and 6.40 x 13 tyres.



- Designed for those caravanners who want to be really mobile but also want to be away from home possibly for months on end and wish to take all the necessary equipment in great comfort.
- Morlite roof opening section 4' x 2' affording superb ventilation and light inside the caravan.
- Two doors, end kitchen and toilet. Extensive working surfaces. Plenty of cupboards, two chests of drawers, ventilated food cupboard in addition to a space provided for a refrigerator, roof-lockers and airing cupboard. Special ventilation for refrigerator is also incorporated.
- A compactum plus a gentleman's wardrobe. Fitted gas fire and fitted crockery/cocktail cabinet. Water Pump to sink. Rubbish container.
- Beds—two single, with special spring bases and 4" polyether foam mattress (5" on solid base alternative), extra wide with padded sloping backs.

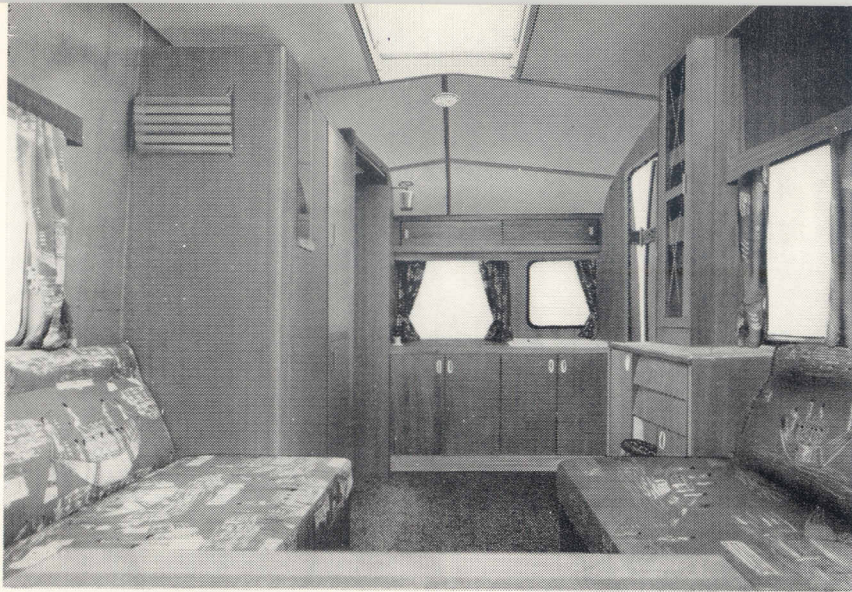
SHIPPING SPECIFICATION

2-BERTH

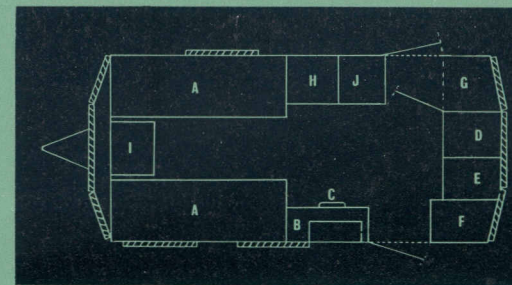
Ex-works weight	14½ cwt. (737 kg)
Overall sizes :	Length 16' 10" (513 cm)
	Width 6' 6" (198 cm)
	Height 7' 10" (239 cm)

4-BERTH

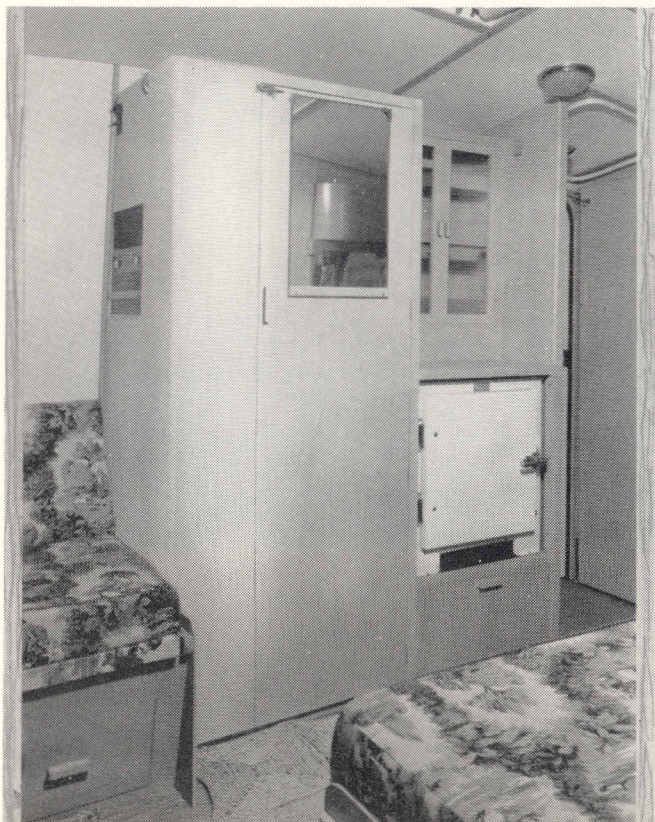
Ex-works weight	14¼ cwt. (724 kg)
Overall sizes :	Length 16' 10" (513 cm)
	Width 6' 6" (198 cm)
	Height 7' 10" (239 cm)



PUKU — View of interior, 2 berth.





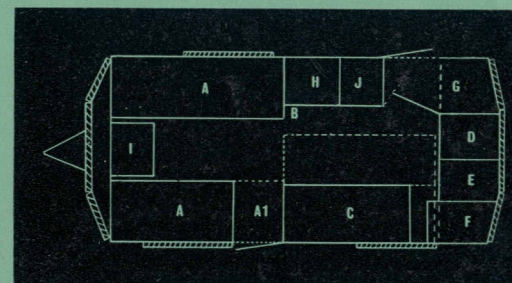
- A Single beds.
- B Cupboard and drawers and ventilated food cupboard. Cocktail/crockery cabinet above.
- C Built-in gas fire.
- D Kitchen unit with grill.
- E Working surface. } Kitchen cupboards under
- F Surface combined sink and drainer. }
- G Toilet F.R.P., fixed vents end and side.
- H Compactum wardrobe.
- I Chest of drawers, hinged table on face.
- J Gentleman's wardrobe with cupboard underneath, ventilated to receive refrigerator if required.



PUKU — view of interior, 4-berth.

This photograph illustrates a refrigerator which is an optional extra.

PUKU 2-berth 
4-berth 



- A Single bed.
- A1 Floor space in daytime. Bed end moves to form single bed A, A1.
- B Point for gas fire.
- C Settee by day extending sideways and longways to form double bed.
- D Cooker
- E Working surface } Kitchen cupboards under
- F Combined sink and draining board }
- G Toilet F.R.P., fixed vents end and side.
- H Compactum wardrobe
- I Chest of drawers with hinged table on face.
- J Space for refrigerator with fitted crockery cupboard above and ventilated locker below.