

The folding step as illustrated is available as an extra on all models.

Puku



The latest in our range, this two-berth model is being introduced to meet the demand from many experienced caravanners who wish to use a two-berth model—and like the Sable, but want something a little larger.

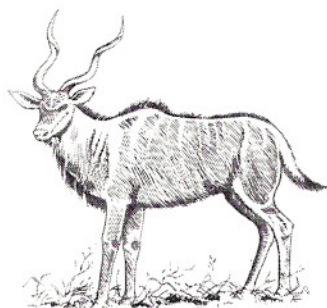
The shell is exactly similar in style and size to the Kudu, but incorporates an extra outside door.

The interior is similar to the Sable layout, probably the best ever produced. Many Sable units are used in the Puku, as the floor plan shows and all the special features are included. In addition there is an extra wardrobe, a cupboard ready to receive a refrigerator, and a fitted gas fire with enlarged crockery/cocktail cabinet above.

'PUKU' 2-berth: 14' 4" long; 6' 6" wide. Ex-works weight 14½ cwt.

PRICE, ex-works: £595 0 0.

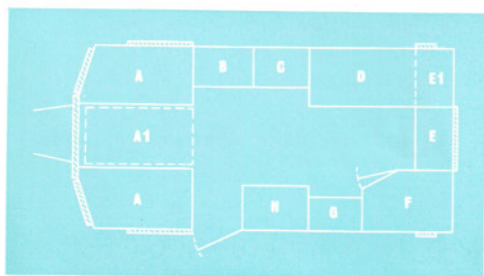
Kudu



The Kudu 14' 4" x 6' 6" has a layout giving a dinette double bed in the front end, and next to it a large chest of drawers and ventilated cupboard space. Above there is another locker with bottle clips included. One single bed runs from this unit right to the rear end of the caravan, and the second single bed is bunk style and hinges down to form a backrest by day. The gas cylinder also stores and connects up under this bed; a gas fire point is fitted on this bed front. At the rear end is the cooker with detachable working top and cupboard below, the toilet and the sink and draining board. There is a pump fitted at the sink, fed by a flexible pipe from water carriers stored underneath. There is also ventilated storage for food and dry goods, etc.; and an easy-to-hand crockery cabinet above. All working tops are Formica covered. The wardrobe, which includes roomy shelves as well as hanging space, is just next to the door. A curtain, running on track, is supplied to partition off the two single beds when desired. This leaves the whole of the rest of the 'van in use after children are put to bed. Two gas and two electric lights are standard equipment: also side lights, rear lights, and flasher lights and number plate illuminator. The mattresses are 5" plastic foam for comfort and lightness, latex foam is also available. A fitted pile carpet with mottled colours gives the finishing touch to tone with the wide choice of upholstery materials available. The standard exterior colour finish is Old English White, but Vellum, Pearl Grey, Ice Blue and Lichen Green are also offered, with the trim picked out in Carnation Red, Lethbridge Green, Powder Grey, Sky Blue or Thames Blue. Independent suspension, used so successfully on the 'Springbok' is used on the 'Kudu,' having slightly lighter springs.

'KUDU' 4-berth PRICE ex-works: £560 0 0. Ex-works weight: 14 cwt. 2 qtrs.

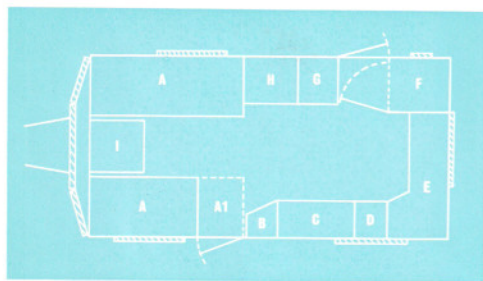
KUDU



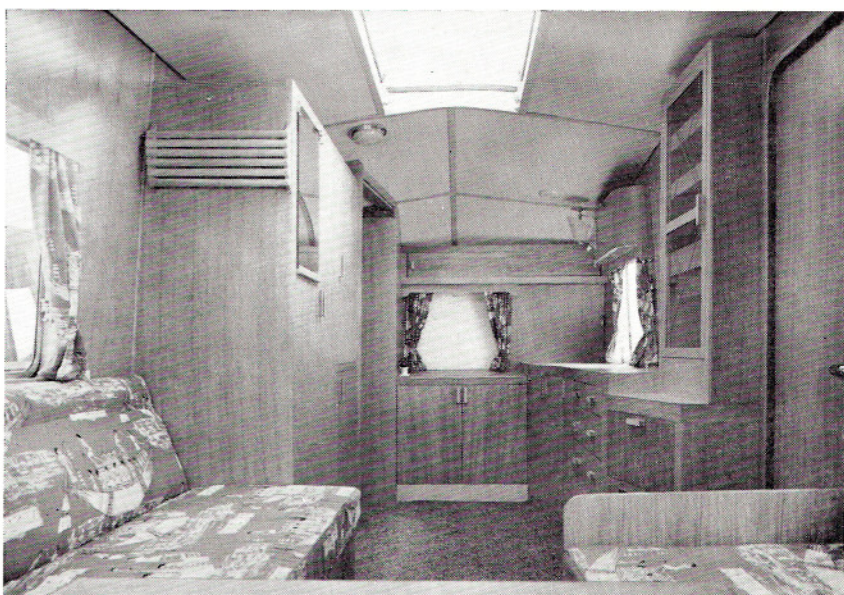
- A Double Bed Dinette
- A1 Detachable Table also used for forming double Dinette
- B Chest of Drawers
- C Cupboard, Wall Cupboard and Book Shelf above
- D Single Bed, Storage Space for Gas Cylinder
- E Cooker Unit with Storage Beneath
- E1 Detachable Cover for E—Also forms working top in Position E1
- F Toilet Compartment
- G Sink and Draining Board with Pump. Ventilated Storage Space for Food and Water Cans beneath. China Cabinet above.
- H Compactum



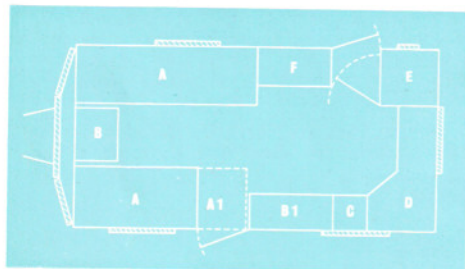
PUKU



- A Single Beds
- A1 Floor space in daytime. Bed end moves to form single bed A, A1
- B Cocktail/crockery cabinet, with cupboard and fitted gas fire beneath
- C Chest of Drawers
- D Ventilated food cupboard
- E Kitchen unit with grill, combined sink and draining board, pump, with plate rack and cupboards with rubbish bin beneath. Also storage space for gas cylinder and water carriers
- F Toilet
- G Gentleman's wardrobe with cupboard beneath, ventilated to receive refrigerator if required
- H Wide wardrobe
- I Chest of drawers, with hinged table on face



SABLE



- A Single beds
- A1 Floor space in day time. Bed end moves to form single bed A, A1
- B, B1 Chests of drawers, with hinged table on face of B. Cocktail and china cabinet above B1
- C Food cupboard
- D Kitchen unit with grill, combined sink and draining board, with cupboards underneath
- E Toilet
- F Compactum

