

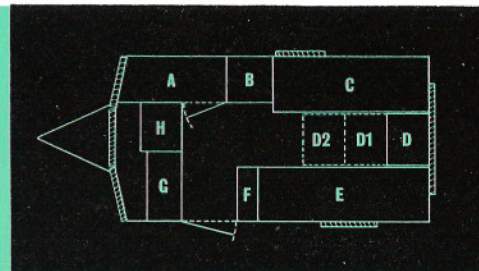
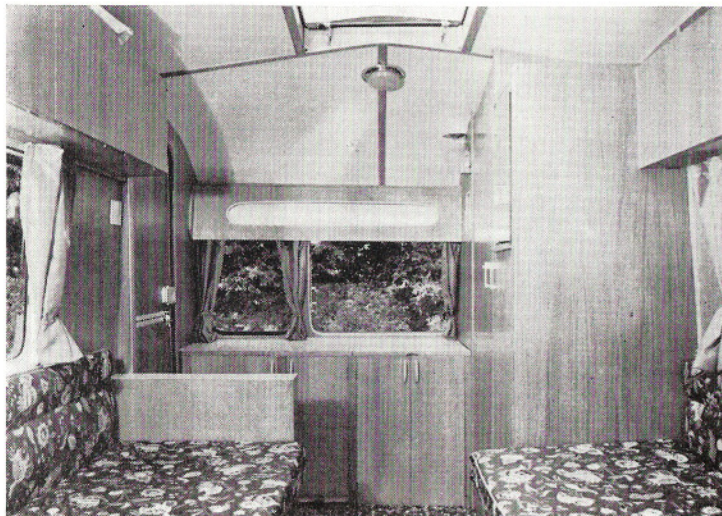
the fleet FAWN

This, as the name implies, is the smallest in our range. Introduced six years ago, this caravan is now a proved winner. Generally speaking, vans of this length are too small to be comfortable. Five could feed in this model quite easily, and a 6 foot person need not feel cramped by day or night — one bed is 6' 3".

- Two berth, 11' 2" (340 cm) long, 6' 3" (191 cm) wide, and 6' 3" (191 cm) headroom. The body styling has a G.R.P. roof coming down to top of window level, and with the rainwater gutter moulded into the exterior profile. The roof incorporates top awning rails fitted integrally with gutter all round roof. The G.R.P. front and rear sections have deep 'wrap round' sides, and a 4' 6" rear window, top hinged, gives panoramic views.
- Apart from the beds, main features are an end kitchen, compactum type wardrobe, cooking and washing facilities, and a separate toilet compartment.
- Mattresses on this model are 5" polyurethane foam on solid bases — covers to choice.



Interior of Fawn looking to rear of van



- | | | | |
|---|---|--------------------------------------|--|
| A | Toilet compartment fitted with Elsan or similar. | F2 | Hinged working top and space for refrigerator. |
| B | Stores cupboard with lined working surface above. | G | Combined sink and drainer with cupboard under. |
| C | Single bed 5' 11" with hinged back rest. Large storage space below — magazine rack and roof locker above. | H | Foot water pump. |
| D | Chest fitted 3 drawers and a locker. Hinged top extends to position D1 or D2 as required. | I | Hotplate with locker under. Complete inside and outside electric lighting seven core cable supplied. Gas lighting also included. |
| E | Single bed 6' 3" with locker under and locker and china cabinet above. | SHIPPING SPECIFICATIONS | |
| F | Compactum type wardrobe. | Ex-works weight: 11 cwt. (559 kg) | |
| | | Overall size: Length 13' 4" (406 cm) | |
| | | Width 6' 3" (191 cm) | |
| | | Height 7' 8" (234 cm) | |